

Pitch: Society related thematic areas (Leeds, IRU)

User awareness, users and societal acceptance and ethics, driver training

Policy and regulatory needs, European harmonisation

Socio-economic assessment and sustainability

Safety validation and roadworthiness testing

New themes?

Liveable cities

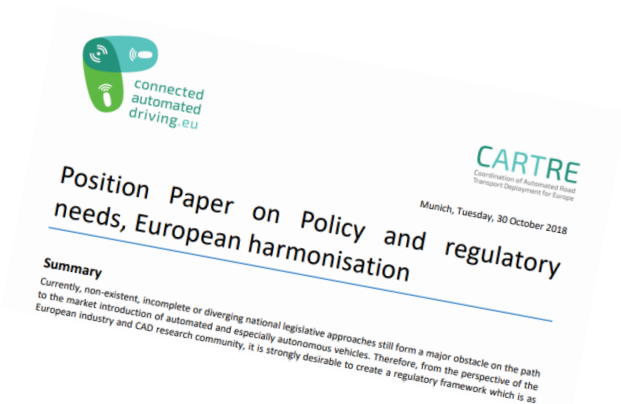
Safety of the intended function

Equity and accessibility

Background: CARTRE thematic papers & CARTRE Scenarios D5.3



- Scenario-based assessment, aimed at comparing the impacts of four potential future scenarios
- Experts from industry, research and road authorities, discussed the socioeconomic impacts of automated car driving
- Built on the work of the Trilateral ART Working Group on Impact areas and KPIs
- For each KPI, it was discussed what would be the direction of change from the societal perspective



	SHORT-TERM SCENARIO (~2025)	LONG-TERM SCENARIOS (~2035)		
	Scenario 1 Gradual extrapolation of automated services	Scenario 2 Market-operated fleets of shared automated vehicles	Scenario 3 Authority driven shared automated transportation	Scenario 4 Proliferation of private automated vehicles
Automated vehicle technology	Gradual introduction of automated functions	Mature SAE L4 automated vehicles, penetration >50% in mixed traffic		
Use of shared mobility services	High interest, early adaptors use	High	High	Low
Locus of control	Cautious but enthusiastic public support to automated vehicles & mobility services	Private	Authority driven, public-private collaboration	Private



Thematic Areas included in Task 3.4

- The impact of CAD on social aspects will be significant.
- The implementation of full automation will be gradual and will involve reshaping of:
 - vehicle usage
 - mobility schemes
 - required skills
 - professions
 - actors with new entrants in the mobility market
- The level of acceptance will be different for different users: citizens, public and private operators, professional drivers.
- Regulation will need to be adapted to guarantee safety, security and sustainability of the new mobility frameworks.

- **Safety validation and roadworthiness testing (IDIADA / RDW)**
- **Policy and regulatory needs, European harmonisation (Renault / RWS)**
- **User awareness, users and societal acceptance and ethics, driver Training (FIA / IRU)**
- **Socio-economic assessment and sustainability (VTT / LEEDS)**